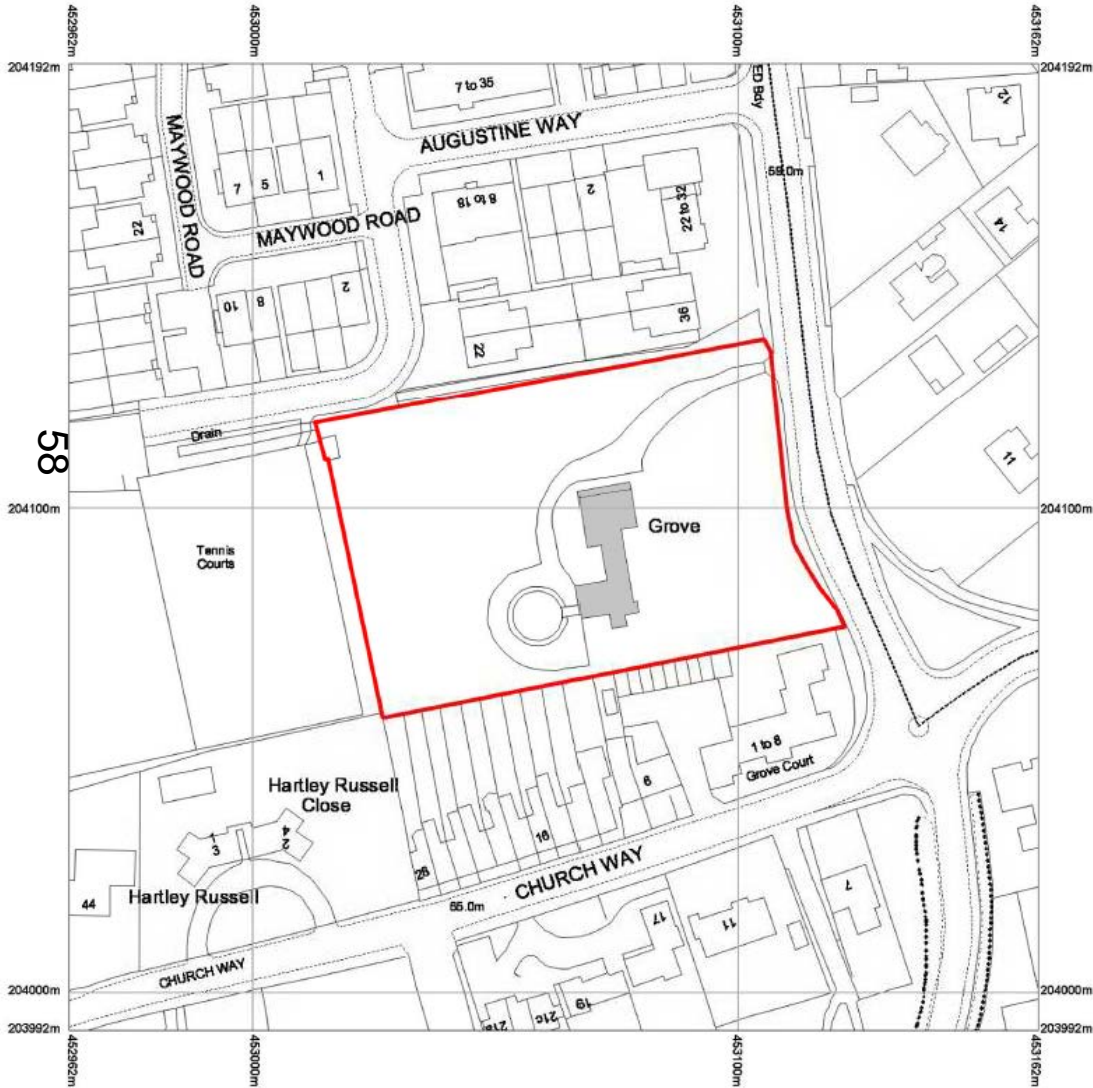


Welcome to the East Area Planning Committee

- This planning committee meeting is held in public but it is not a public meeting.
- There will be an opportunity for the public to address the committee on each application.
- 57 • If you wish to speak for or against a planning application, you need to have either requested it in advance, or hand in one of the available speaker forms, or speak to the clerk.
- Information on meeting protocol and conduct at the committee is set out in the Code of Practice.
- This is in the committee agenda just before the first planning application report.

Site Plan – 44 Iffley Turn



www.oxford.gov.uk

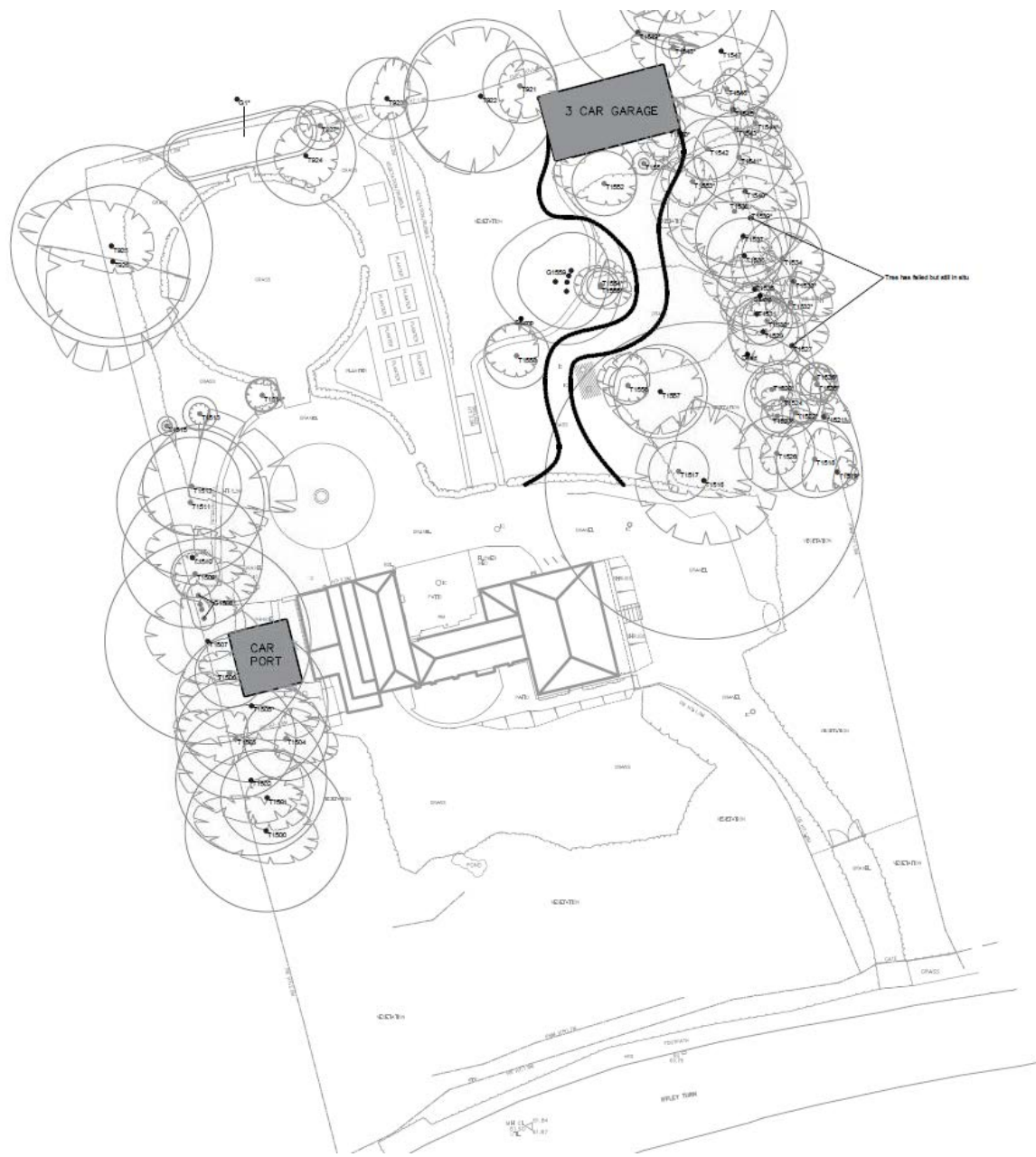


**OXFORD
CITY
COUNCIL**



Proposed Site Plan

59



www.oxford.gov.uk



View towards Church Way – Location of single car garage



www.oxford.gov.uk



Location of two storey garage and access gate to Augustine Way



www.oxford.gov.uk



**OXFORD
CITY
COUNCIL**



Route of proposed driveway



www.oxford.gov.uk



**OXFORD
CITY
COUNCIL**



Driveway to Iffley Turn



www.oxford.gov.uk



**OXFORD
CITY
COUNCIL**



Internal alterations



Photos of existing bathroom, to be changed to a bedroom.

Elevation of Grove House – new window

65



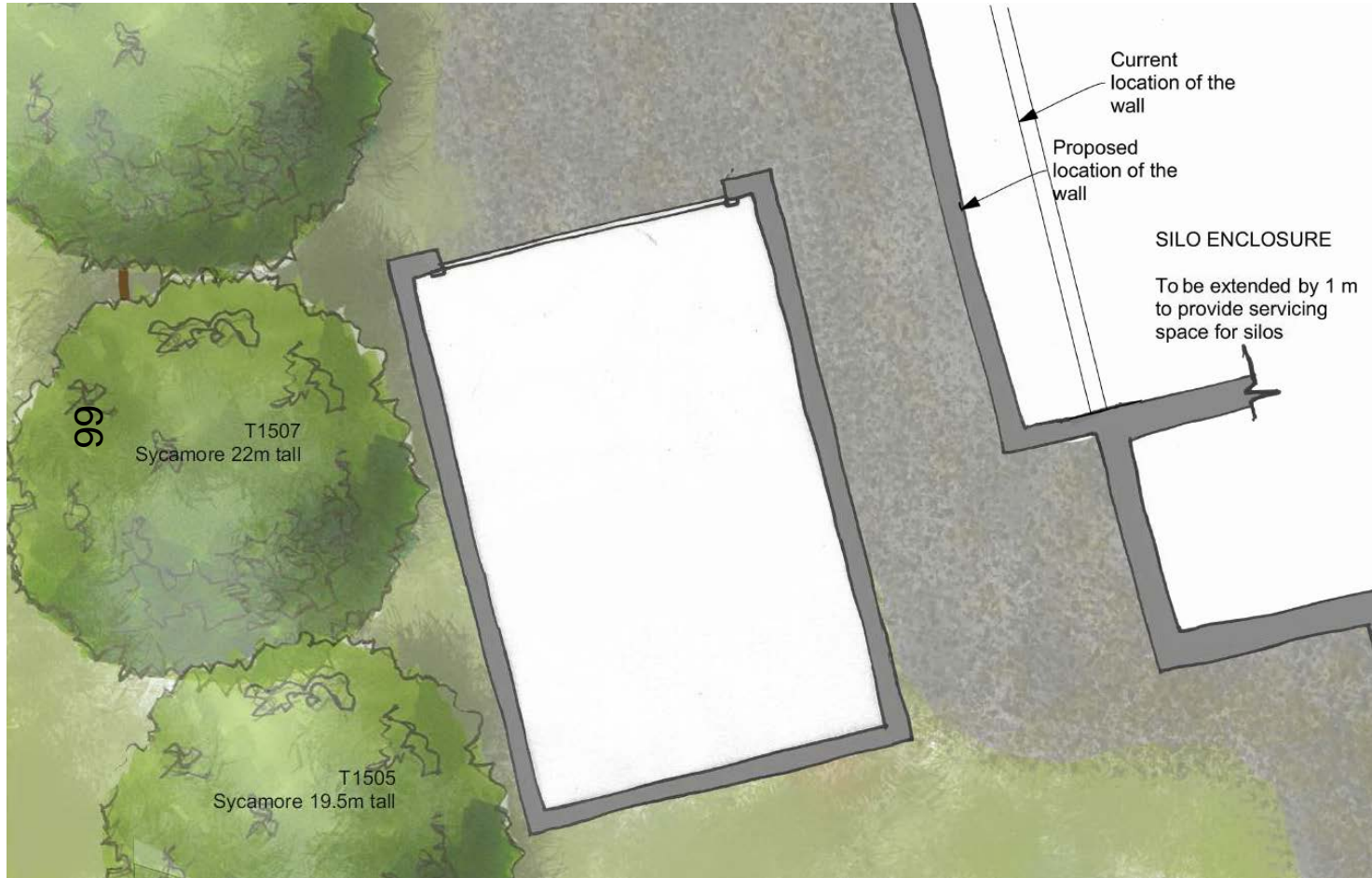
www.oxford.gov.uk



**OXFORD
CITY
COUNCIL**



Proposed single car garage plan



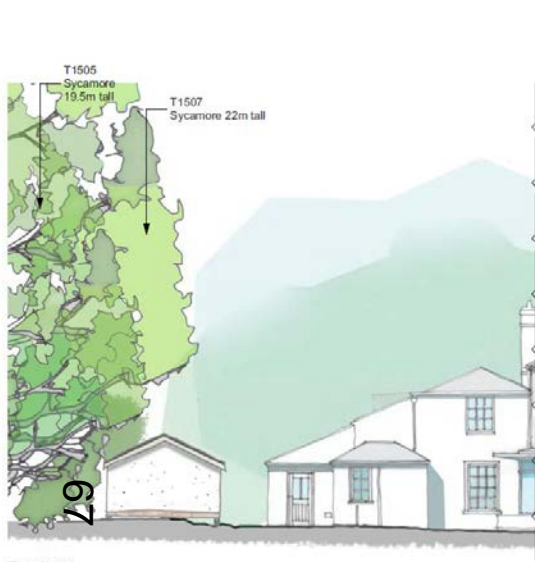
www.oxford.gov.uk



**OXFORD
CITY
COUNCIL**



Proposed single car garage elevations



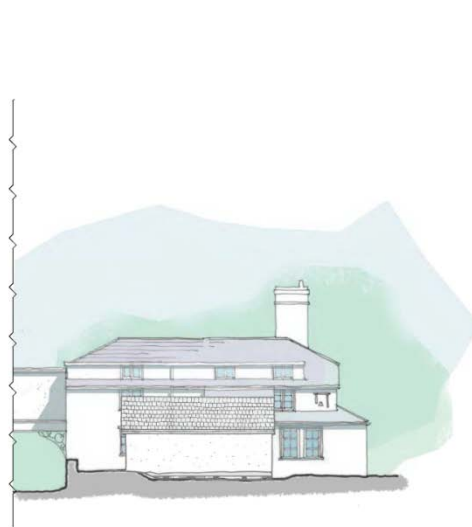
Elevation 1



Elevation 2



Elevation 3



Elevation 4

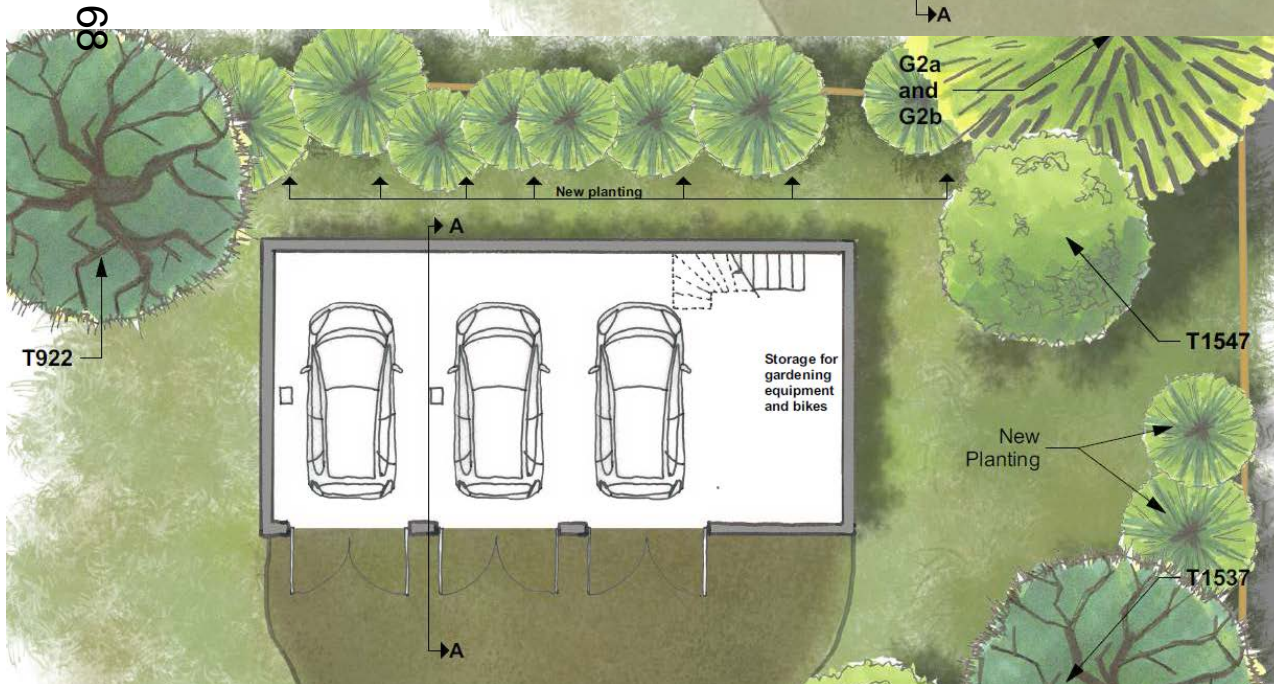
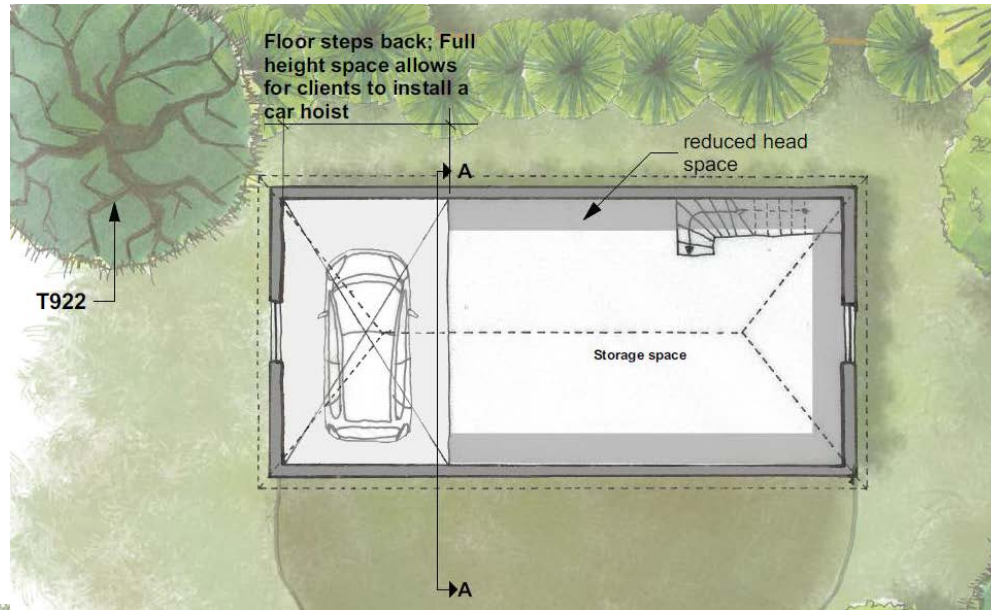
www.oxford.gov.uk



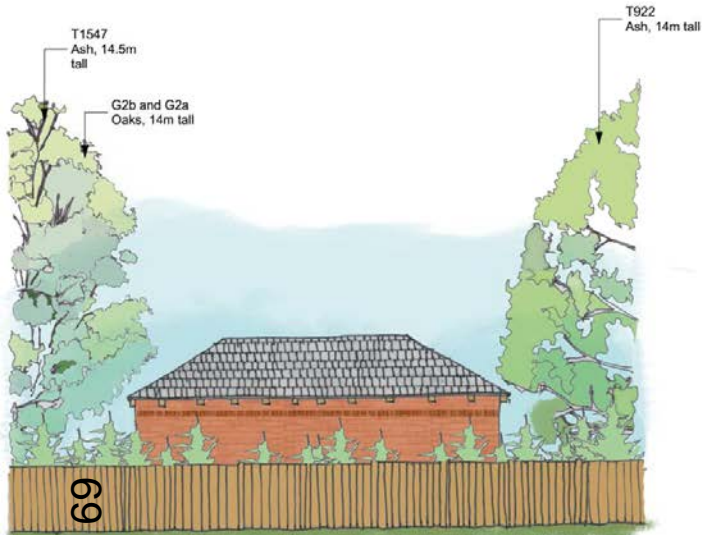
**OXFORD
CITY
COUNCIL**



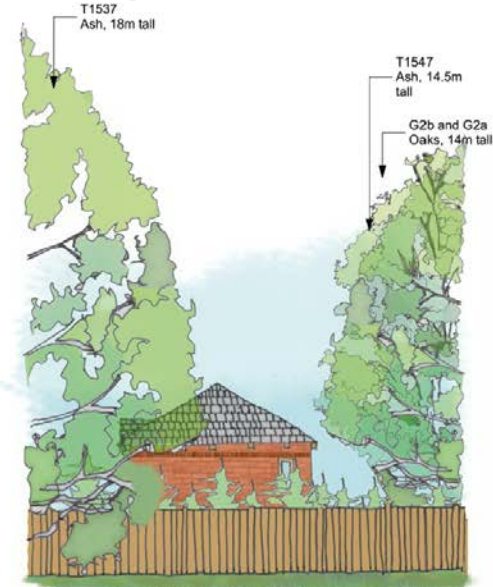
Proposed triple car garage plans



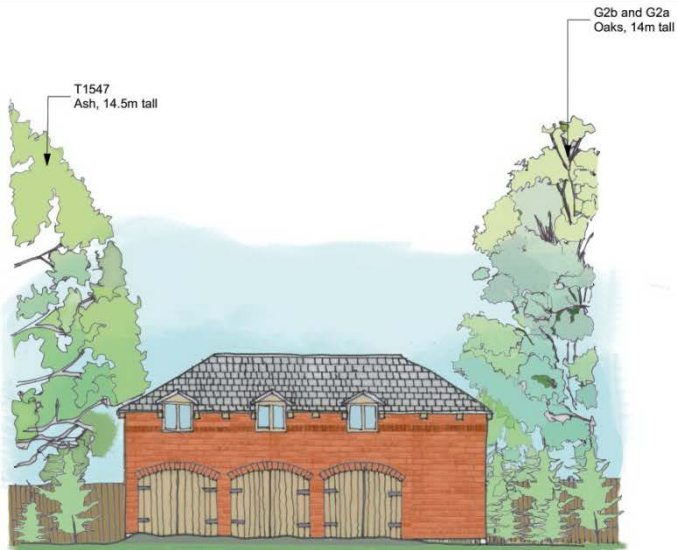
Proposed triple car garage elevations



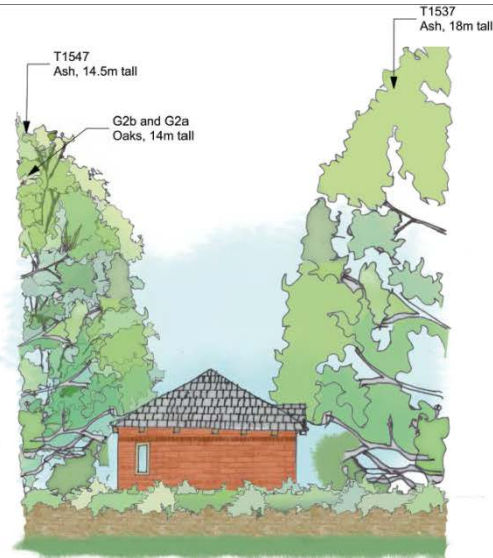
ELEVATION 1 -
seen from the
school



ELEVATION 2 -
Seen from
Augustine Way



ELEVATION 3 - seen from Grove House
garden



ELEVATION 4 - seen from Grove House garden

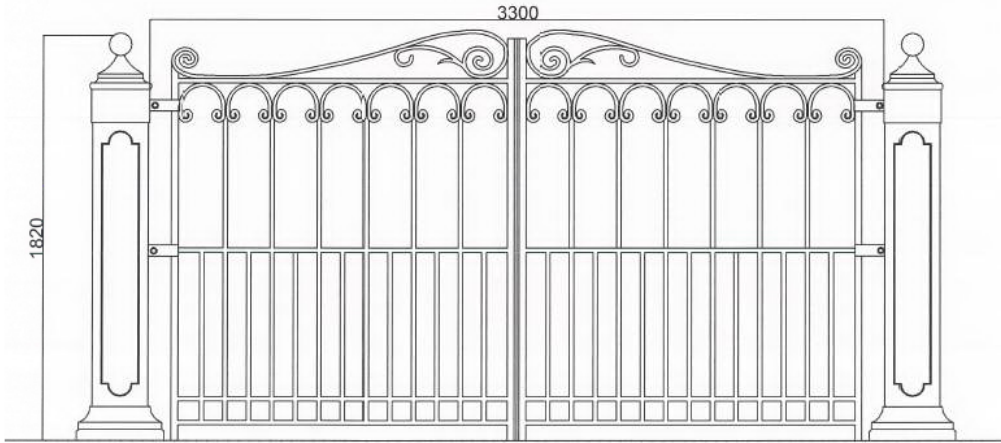
www.oxford.gov.uk



OXFORD
CITY
COUNCIL



Proposed gates



Elevation of the proposed gate; Please refer to the location plan

www.oxford.gov.uk



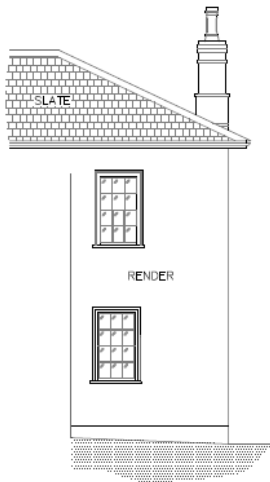
70



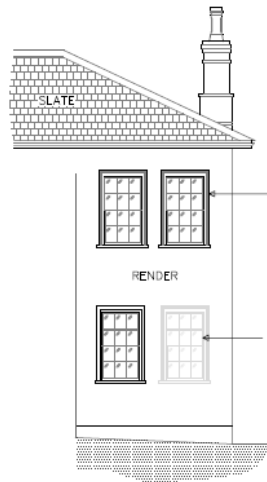
Proposed window



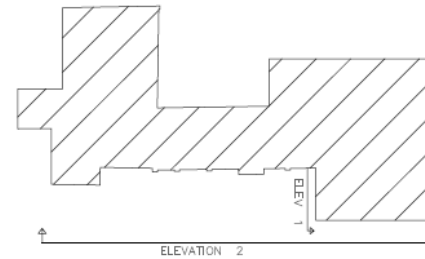
ELEVATION 2
EXISTING EAST ELEVATION TO REMAIN UNCHANGED
SCALE 1:100 ON A3



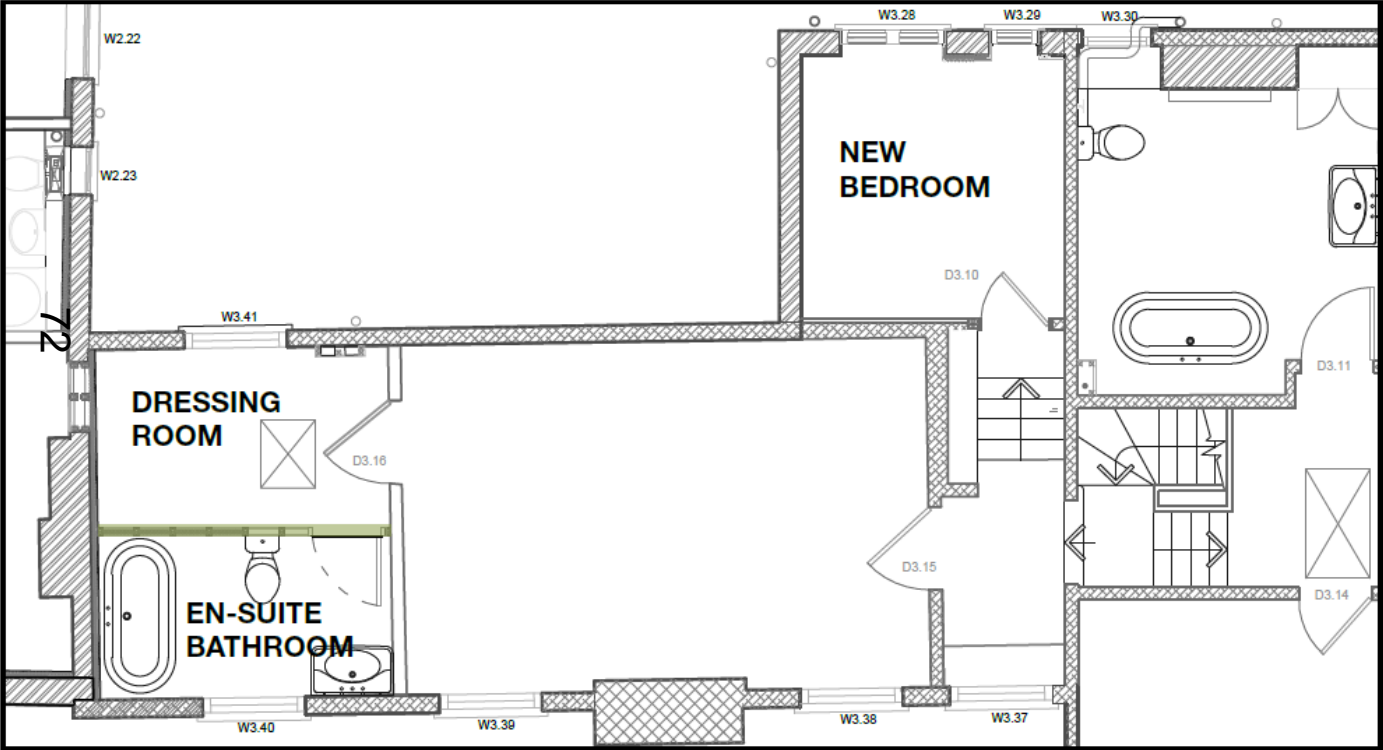
ELEVATION 1
EXISTING ELEVATION
SCALE 1:100 ON A3



ELEVATION 1
PROPOSED ELEVATION
SCALE 1:100 ON A3



Proposed internal alterations



Proposed design
Plan drawing, scale 1:100@A3

■ Proposed partition

